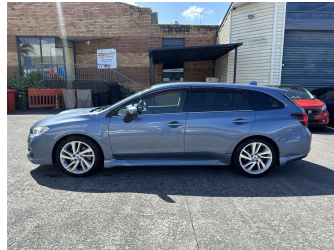


2014 Subaru LEVORG 2.0 GT-S EYESIGHT




Purchase Price **\$18,995**

Includes GST
Excludes on-road costs of \$500


Indicative repayments

\$92.62 per week*

Based on a 208 week term & 25% deposit.
Total repayments (208) = **\$24,138.18**




Gain peace of mind with **Mechanical Breakdown Insurance. Ask us how.**



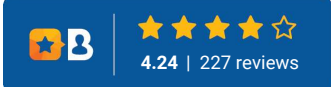
Top features

- » ABS Braking
- » Cruise Control
- » Electric Mirrors
- » Electric Windows
- » Power Steering

Body Style	Station Wagon	Reg No.	-
Odometer	61,000 km	Ext Colour	Blue Metallic
Engine	2000 cc	History	-
Fuel Type	Petrol	Seats	5 seats
Transmission	Tiptronic	CO2 Emissions	★★★★☆
Wheels	-	195 grams/km	
VIN	7AT0GF22X24004003	Energy Economy	★★☆☆☆☆
Interior	Black, Cloth	Annual fuel cost of \$3,290	
Safety		8.4L per 100km	
	Based on 2024 VSRR rating	Cost per year is an estimate based on petrol price of \$2.80 per litre and an average distance of 14000 km. Emissions and Energy Economy figures standardised to 3P WLTP.	
		Stock ID: 13394	



Auto 4 U - Albany | Phone 0212288707 | Email auto4ualbany@gmail.com
1B William Pickering Drive, Rosedale, Auckland 0632, New Zealand
www.auto4u.co.nz



* Auto 4 U - Albany is not a lender nor a financial adviser. Any amounts displayed should not be seen as an offer of finance or taken as financial advice. The interest rate, fees and loan term used in this calculation may not actually represent those available from lenders. Actual interest rates, fees and loan terms will vary per lender and are typically based on an assessment of your credit risk and responsible lending criteria. Any repayment amounts displayed are indicative only and have been calculated using several other indicative inputs. The interest rate used in this calculation is an arbitrary 12.95%, however exact interest rates vary per lender. The term of the loan used in this calculation is 208 weeks. Exact terms available vary per lender although options typically include 6, 12, 18, 24, 36, 48 and 60 months. This calculation also includes a typical mandatory fee charged by lenders. This is a one-off establishment fee of \$400.00. Typically, this fee can be paid upfront or, as in this calculation, be capitalised over the contract term, ie. included in the loan amount. This fee can vary per lender and other non-mandatory fees and charges may also apply. The total amount of repayments has been calculated by multiplying 208 weekly repayments (based on a 208 week term) by the weekly repayment amount of \$92.62 which equals \$24,138.18. This calculator does not consider any of your own personal circumstances and we strongly suggest you seek budgeting advice prior to committing to any loan contract. Responsible lending criteria and lender terms and conditions will likely apply to any finalised loan contract. Proof of security and/or vehicle insurance may also be required before proceeding.