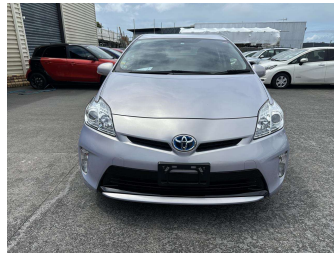


2015 Toyota Prius 1800cc Hybrid Low Mileage




Purchase Price **\$13,495**

Includes GST
Excludes on-road costs of \$500


Indicative repayments

\$67.18 per week*

Based on a 208 week term & 25% deposit.
Total repayments (208) = \$17,472.95



Gain peace of mind with
Mechanical Breakdown Insurance. Ask us how.



Top features

- » ABS Braking
- » Air Bag(s)
- » Air Conditioning
- » Central Locking
- » Central Locking
- » Electric Mirrors
- » Electric Mirrors
- » Electric Mirrors (Retr...
- » Electric Windows
- » Power Steering
- » Remote Locking
- » SMART KEY

Body Style
5 door, Sedan

Odometer
61,000 km

Engine
1800 cc

Fuel Type
Hybrid

Transmission
Auto

Wheels
-

VIN
7AT0H637X25766983

Interior
Black

Safety



Based on 2024 UCSR rating
for 09-16 models

Reg No.

-

Ext Colour
Lavender

History

-

Seats
5 seats

CO2 Emissions

★★★★☆

94 grams/km

Energy Economy

★★★★☆☆

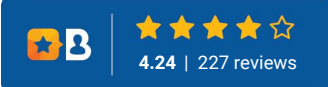
**Annual fuel cost of \$1,570
4L per 100km**

Cost per year is an estimate based
on petrol price of \$2.80 per litre and
an average distance of 14000 km.
Emissions and Energy Economy
figures standardised to 3P WLTP.

Stock ID: 13401



Auto 4 U - Albany | Phone 0212288707 | Email auto4ualbany@gmail.com
1B William Pickering Drive, Rosedale, Auckland 0632, New Zealand
www.auto4u.co.nz



* Auto 4 U - Albany is not a lender nor a financial adviser. Any amounts displayed should not be seen as an offer of finance or taken as financial advice. The interest rate, fees and loan term used in this calculation may not actually represent those available from lenders. Actual interest rates, fees and loan terms will vary per lender and are typically based on an assessment of your credit risk and responsible lending criteria. Any repayment amounts displayed are indicative only and have been calculated using several other indicative inputs. The interest rate used in this calculation is an arbitrary 12.95%, however exact interest rates vary per lender. The term of the loan used in this calculation is 208 weeks. Exact terms available vary per lender although options typically include 6, 12, 18, 24, 36, 48 and 60 months. This calculation also includes a typical mandatory fee charged by lenders. This is a one-off establishment fee of \$400.00. Typically, this fee can be paid upfront or, as in this calculation, be capitalised over the contract term, ie. included in the loan amount. This fee can vary per lender and other non-mandatory fees and charges may also apply. The total amount of repayments has been calculated by multiplying 208 weekly repayments (based on a 208 week term) by the weekly repayment amount of \$67.18 which equals \$17,472.95. This calculator does not consider any of your own personal circumstances and we strongly suggest you seek budgeting advice prior to committing to any loan contract. Responsible lending criteria and lender terms and conditions will likely apply to any finalised loan contract. Proof of security and/or vehicle insurance may also be required before proceeding.